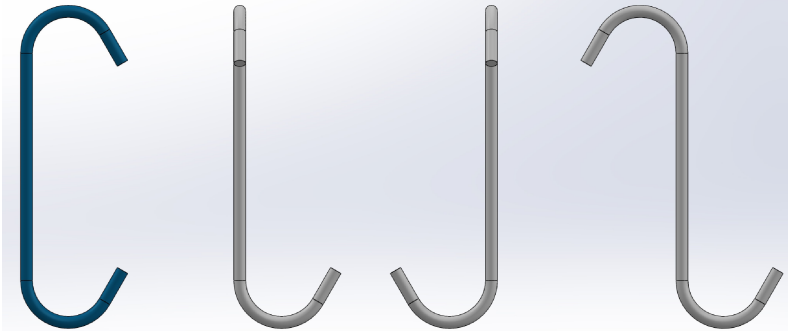


DRITTO
FLAT



CODICE CODE	L(mm)
D6L80-C	80
D6L100-C	100
D6L120-C	120
D6L150-C	150
D6L200-C	200
D6L250-C	250
D6L300-C	300
D6L350-C	350
D6L400-C	400
D6L450-C	450
D6L500-C	500
D6L600-C	600
D6L700-C	700
D6L800-C	800
D6L900-C	900
D6L1000-C	1000

DESCRIZIONE / DESCRIPTION

GANCIO ACCIAIO "EN10270-SM" Ø6, PIEGA STANDARD "C"
STEEL HOOK "EN10270-SM" Ø6, STANDARD BENDING "C"

MATERIALE / MATERIAL

EN10270-SM (C70)



SCALA / SCALE

1:1

FORMATO / SHEET SIZE

A4



Rostirolla s.r.l.